

mummabilities

SPECIAL KIDS. SPECIAL NEEDS. SPECIAL SOLUTIONS.

PROFILE & PRODUCTS



Hope Island, QLD 4212



0476 806 917



mummabilities@gmail.com



www.mummabilities.com.au

PROUD DISTRIBUTOR OF



ABOUT MUMMABILITIES



I have been a special needs mum for more than 12 years now, so I would call myself a semi-pro with still so much to learn. Our beautiful son, Steele, was born with a very rare chromosome disorder, one that we only learnt about 4 days after his birth. I had a happy, healthy pregnancy, so this cyclone of lessons sure came as surprise. A surprise that I was somehow ready for. From the moment I kissed his warm lips, I knew I was his Mumma forever and that I, and his Dadda of course, were made to be his everything.

And so, our journey began. From doctors to specialists to surgeries, Steele has been (and still is) our greatest teacher.

At some stage, we all ponder our purpose in life. I believe a big part of mine is to reach out to those travelling a similar journey to ours and share what I have learnt, starting with resources and tools that have not only added a tremendous amount of value to Steele's progression, but made our family's life one little step easier each time.

Being a full-time working mum too, time was never on my side, but 2020 brought with it a new slate. I held my breath, jumped....and Mummabilities was born.

I am Steele's "Mumma" and I want to share with you my "abilities" – the lessons I have learnt with the means and skills I have adopted to help us along our journey.

Tarryn xxx

EXCLUSIVE DISTRIBUTOR

EASY UP



This is the product that made me realise I needed to put my ideas into action. My son has been wearing AFOs since the age of 2. We were introduced to these AFO friendly shoes over 6 years ago and haven't found any other product remotely similar in their functionality, comfort and style. Mummabilities is the exclusive distributor of EASY UP® shoes in Australia. I wanted to introduce these incredible hand-made Italian shoes to the Australian market and help make managing AFOs a little easier.

THE DESIGN



Handmade in Italy, the EASY UP® collection is designed for independent use by AFO, DAFO, splint users, or those with reduced or lost mobility.

Thanks to its "trap door like" rear opening, the shoe can completely open, allowing the foot (with AFO) to easily slide into place.

The innovative EASY UP BOA® lacing system closes the "trap door" and adjusts the shoe to fit the foot perfectly. This means that there are no pressure points on the instep that tend to be common with laces and velcro. The simplicity of the EASY UP BOA® lacing system means that the shoe can be placed on and off with one hand, or easily by the carer.

CUSTOMISE YOUR WAY



EASY UP® shoes are custom made to your selection. All you have to do is:

1. Decide on a suitable dial position (side or back)
2. Select your preference in model/style (Children's, Men's or Ladies)
3. Select your preference in lining, sole and heel
4. Verify your size
5. Place your order online via Paypal, request an invoice or email

CUSTOM MADE



PRODUCT RANGE

The EASY UP® product range has a style to suit everyone. There are 20 styles in the Children's collection and 5 styles in both the Women's and Men's collections.

There are 2 position options for the dial of the EASY UP BOA® lacing system. Some EASY UP® models have a rear dial and some have a side dial, which would better suit wheelchair users or those with restricted movement.



SIDE & BACK DIAL MODELS

CHILDREN'S SIDE DIAL MODELS - Air, Buddy, Grow, Kid, Neo, Olly (sandal), Quattro, Quattro (sandal), Quilt, Rain, Silver, Sock, Snow and Wing.

CHILDREN'S BACK DIAL MODELS - Explorer, Ice, Laser, Rover, Star, Trekker (winter).

ADULT SIDE DIAL MODELS - Mens: WMS and WMB.
Ladies: WWS and WWB.

ADULT BACK DIAL MODELS - Mens: SM, SMB and FM.
Ladies: SW, SWB and FW.

LINING, SOLES & HEELS



When selecting the options best suited for you or the person you care for, the following can be considered:

INNER LINING - Plain (full) or perforated lining for better breathability.

SOLES - Standard (firm), Flexible or Special walker sole.

HEELS - Flat heel (greater stability) or rolling heel (normal gait/DAFOs).

EASY UP® RANGE

CHILDREN'S RANGE

AIR COLLECTION

Art. AR01



Art. AR02



Art. AR03



BUDDY COLLECTION

Art. BD01



Art. BD03



Art. BD04



Art. BD07



Art. BD08



Art. BD09



Art. BD10



Art. BD11



Art. BD12



EASY UP® RANGE

CHILDREN'S RANGE

BUDDY COLLECTION



Art. BD13



Art. BD14



Art. BD15



Art. BD20



Art. BD21



Art. BD22



Art. BD23



Art. BD24



Art. BD25



Art. BD26



Art. BD 27



Art. BD28

EASY UP® RANGE

CHILDREN'S RANGE

BUDDY COLLECTION

Art. BD29



Art. BD30



Art. BD31



Art. BD32



Art. BD33



Art. BD34



Art. BD35



Art. BD36



Art. BD37



Art. BD38



Art. BD39



Art. BD40



EASY UP® RANGE

CHILDREN'S RANGE

BUDDY COLLECTION

Art. BD41



STAR COLLECTION

Art. SB01



Art. SB02



Art. SB04



Art. SB07



Art. SB09



Art. SB11



Art. SG03



Art. SG06



EASY UP® RANGE

CHILDREN'S RANGE

KID COLLECTION

Art. KD01



Art. KD02



Art. KD03



Art. KD04



Art. KD05



Art. KD06



Art. KD07



Art. KD08



Art. KD09



Art. KD10



EASY UP® RANGE

CHILDREN'S RANGE

LASER COLLECTION

Art. LB02



Art. LB03



Art. LG01



Art. LG02



ICE COLLECTION

Art. IB01



Art. IB03



Art. IG01



Art. IG02



EASY UP® RANGE

CHILDREN'S RANGE

SILVER COLLECTION

Art. SV01



Art. SV02



Art. SV03



Art. SV04



Art. SV05



Art. SV06



NEO COLLECTION

Art. NE01



Art. NE02



EASY UP® RANGE

CHILDREN'S RANGE

QUATTRO COLLECTION

Art. QU01



Art. QU02



QUILT COLLECTION

Art. QT01



Art. QT02



Art. QT03



RAIN COLLECTION

Art. RA01



Art. RA02



EASY UP® RANGE

CHILDREN'S RANGE

SNOW COLLECTION

Art. SN01



Art. SN02



Art. SN03



Art. SN04



SOCK COLLECTION

Art. SC01



Art. SC02



Art. SC03



EASY UP® RANGE

CHILDREN'S RANGE

WING COLLECTION

Art. WG02



Art. WG03



Art. WG06



Art. WG07



GROW COLLECTION

Art. GW01



Art. GW02



QUATTRO SANDAL COLLECTION

Art. SQ01



Art. SQ02



EASY UP® RANGE

CHILDREN'S RANGE

OLLY SANDAL COLLECTION

Art. OL01



Art. OL02



Art. OL03



TREKKER COLLECTION

Art. TR01



Art. TR02



ROVER COLLECTION

Art. RV01



Art. RV02



EXPLORER COLLECTION

Art. XP01



Art. XP02



EASY UP® RANGE

MEN'S RANGE

WALK COLLECTION

WMS 01



WMS 02



WALK BOOT COLLECTION

WMB 01



WMB 02



SMART COLLECTION

SM 01



SM 02



SMART BOOT COLLECTION

SMB 01



SMB 02



EASY UP® RANGE

MEN'S RANGE

FREE COLLECTION

FM 01



FM 02



FM 03



FM 04



FM 05



EASY UP® RANGE

LADIES RANGE

WALK COLLECTION

WWS01



WWS02



WALK BOOT COLLECTION

WWB01



WWB02



SMART COLLECTION

SW01



SW03



SMART BOOT COLLECTION

SWB01



SWB02



EASY UP® RANGE

LADIES RANGE

FREE COLLECTION

FW01



FW02



FW03



FW04



FW05



SIZE CHART



VERIFY YOUR SIZE

Sizing

Please use the chart below as a reference when verifying the correct size:

A : OVERALL LENGTH

B : TWIST TOES PERIMETER (circumference)

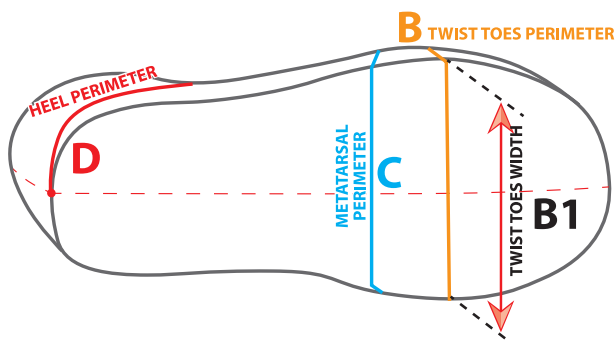
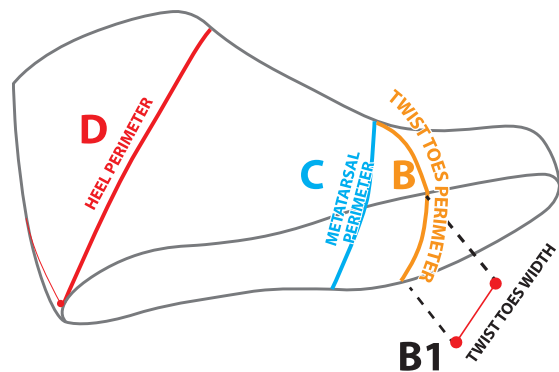
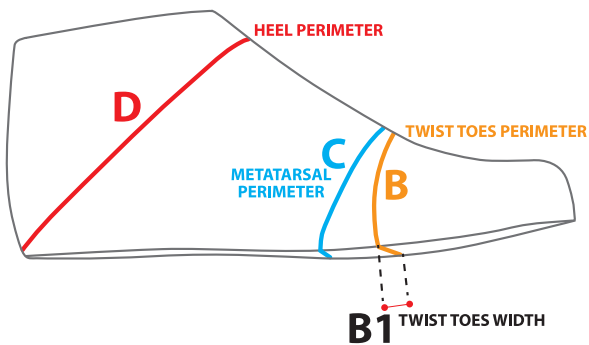
B1: TWIST TOES WIDTH

C : METATARSAL PERIMETER / ANATOMIC BALL (circumference)

D : HIGH INSTEP / HEEL PERIMETER (circumference)

REFERENCE GUIDE

The following measurements are intended as a guide to assist you in determining the best fit in the Easy Up Kids range. They are based on production measurements. Tolerance \pm is allowed. Should your measurements largely deviate from one or more of the below references, please request assistance from your professional orthotist. A basic "rule" to follow (for Kids and Adults range) is to measure the length of your foot/feet with AFO on and reference this to A (Overall length).



SIZE CHART



All measurements must be taken while wearing AFO or splints.
Please email mummabilities@gmail.com with any queries.

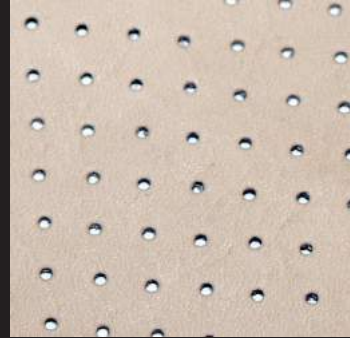
SIZE	A	B	C	D	B1
20	13,30 cm	16,70 cm	18,00 cm	22,20 cm	5,92 cm
21	13,95 cm	17,15 cm	18,50 cm	22,85 cm	6,10 cm
22	14,60 cm	17,60 cm	19,00 cm	23,50 cm	6,28 cm
23	15,30 cm	18,05 cm	19,50 cm	24,15 cm	6,46 cm
24	15,95 cm	18,50 cm	20,00 cm	24,75 cm	6,64 cm
25	16,60 cm	18,95 cm	20,50 cm	25,40 cm	6,82 cm
26	17,30 cm	19,40 cm	21,00 cm	26,10 cm	7,00 cm
27	17,95 cm	19,85 cm	21,50 cm	26,65 cm	7,18 cm
28	18,60 cm	20,30 cm	22,00 cm	27,30 cm	7,36 cm
29	19,60 cm	20,80 cm	22,70 cm	28,05 cm	7,54 cm
30	19,95 cm	21,25 cm	23,30 cm	28,70 cm	7,72 cm
31	20,60 cm	21,70 cm	23,70 cm	29,35 cm	7,90 cm
32	21,30 cm	22,15 cm	24,20 cm	30,00 cm	8,08 cm
33	21,95 cm	22,60 cm	24,70 cm	30,65 cm	8,26 cm
34	22,55 cm	23,10 cm	25,50 cm	31,50 cm	8,44 cm
35	23,10 cm	23,55 cm	26,00 cm	32,15 cm	8,62 cm
36	23,90 cm	24,00 cm	26,50 cm	32,85 cm	8,80 cm
37	24,55 cm	24,45 cm	27,00 cm	33,50 cm	8,98 cm
38	25,25 cm	24,90 cm	27,60 cm	34,20 cm	9,16 cm
39	25,90 cm	25,35 cm	28,10 cm	34,90 cm	9,34 cm
40	26,55 cm	25,80 cm	28,60 cm	35,55 cm	9,52 cm
41	27,25 cm	26,25 cm	29,20 cm	36,20 cm	9,70 cm
42	27,90 cm	26,70 cm	29,70 cm	36,90 cm	9,88 cm
43	28,55 cm	27,15 cm	30,20 cm	37,55 cm	10,06 cm
44	29,25 cm	27,60 cm	30,70 cm	38,25 cm	10,24 cm
45	29,90 cm	28,06 cm	31,30 cm	38,90 cm	10,42 cm
46	30,55 cm	28,50 cm	31,80 cm	39,55 cm	10,68 cm
47	31,25 cm	29,00 cm	32,30 cm	40,25 cm	10,86 cm

LINING, HEEL & SOLE

LINING OPTIONS



PLAIN



PERFORATED

HEEL OPTIONS



FLAT

The flat heel increases stability for those who do not walk independently and / or for those who wear non-dynamic splints.



ROLLING

The rolling heel helps those who walk independently with a normal gait (stance and swing phase) and / or those who wear dynamic splints / DAFO.

SOLE OPTIONS



STANDARD (FIRM)



FLEXI

LINING, HEEL & SOLE

SOLE OPTIONS continued



SPECIAL WALKER

Designed to accommodate walking aids/equipment.
Please contact me to enquire about this option.

HOW TO ORDER

3 OPTIONS

1. Order online via Paypal at www.mummabilities.com.au
2. Request an invoice via <https://www.mummabilities.com.au/ndis-form>
3. Email your order to mummabilities@gmail.com

If you have any further questions, please contact me via email
at mummabilities@gmail.com or call 0476 806 917.

mummabilities

SPECIAL KIDS. SPECIAL NEEDS. SPECIAL SOLUTIONS.



www.mummabilities.com.au



mummabilities@gmail.com



0476 806 917

PROUD DISTRIBUTOR OF

